



JOIN OUR TEAM!

DEPARTMENT/POSITION

Adapted Recreation/Adapted Recreation Coach

NUMBER OF OPENINGS

Multiple

HIRING STATUS

Immediate

POSITION RESPONSIBILITIES

Your most important responsibility is building relationships with the athletes and participants in our Adapted Recreation programs. Whether you are coaching athletes in a Special Olympic sport, or assisting at an Adapted Recreation social event, your goal is to create a fun and safe environment and build participants' self-esteem. Coaching is done in accordance with the Adapted Recreation and Special Olympic philosophy that everyone is a winner.

PRIMARY QUALIFICATIONS

Skills:

Adapted Recreation knowledge and experience are required. You must be skilled in coaching Special Olympic sports and be comfortable working with individuals with physical and/or developmental challenges. Safety awareness is essential. A background in YMCA philosophy is beneficial.

Competencies:

Most important, you must have a sincere desire to work with and a caring heart for individuals with physical and/or developmental challenges. You must be sensitive to the needs of individuals and have the ability to build rapport with participants and caregivers or parents. You must possess a spirit of sportsmanship and exhibit the Y core values of respect, responsibility, honesty and caring.

SCHEDULE

Variety of shifts available

WAGE

Starting at \$9.00 per hour.

Includes fully paid YMCA adult membership.

ABOUT THE Y

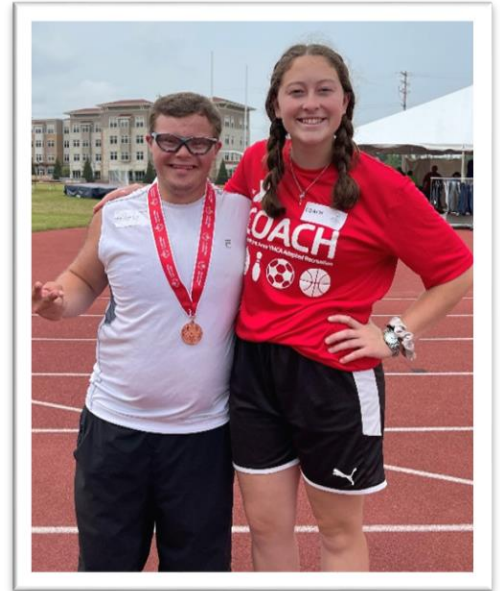
At the Y, we work hard but have fun doing it. The Y is about youth development, healthy living and social responsibility--with emphasis on the core values of respect, responsibility, honesty and caring. Employees describe working at the Y as family-friendly, supportive, welcoming, team atmosphere, fast-paced, and meaningful. The Y offers more than just a job; it offers a cause to embrace. We are conveniently located within blocks of Downtown Stevens Point and UW-Stevens Point.

HOW TO APPLY

A fully completed Stevens Point Area YMCA Employment Application is required. If you are a student, a school schedule is also required. Applications are available at the Member Services desk or online at www.spymca.org, JOBS tab.

INQUIRIES

Contact Kristy Bridenhagen, Gymnastics & Adapted Director, at kbridenhagen@spymca.org or 715-952-9365.



STEVENS POINT AREA YMCA

1000 Division Street, Stevens Point WI 54481

P 715 342 2980 F 715 342 2987 www.spymca.org